

## FOLLIE DI DONNA

Walzer

Durata circa 19'50"

Grado 4.5

Amilcare Ponchielli (1834 - 1886) Op. 122

Versione per banda sinfonica di Emiliano Gusperti

Andante moderato (♩ = 60) **14** poco rall. **5** Walzer n° 1 (♩ = 200) **31**

1-14 15-19 21-51

52 1. **1** 2. **1** **4** 54-57 *p*

61 **4** 62-65 *p* 1.

70 2. Walzer n° 2 **2** *tr* **2** *tr* 71-72 *f* 75-76

78 **2** *tr* 79-80 *pp* 1.

86 2. *pp* **1**

92

97 **1**

102 *tr* **1** 1. **2** 2. **1** 106-107

**Walzer n° 3**

15  
109-123  
1. 1  
125-126  
2. 2  
127-131  
5  
*mf*

133  
6  
134-139  
*mf*

**Walzer n° 4**

143  
2.  
3  
144-146  
15  
147-161  
*p*

164  
*mf*

170  
2.  
1  
173-202  
30  
1. 2  
203-204  
2. 2  
205-206

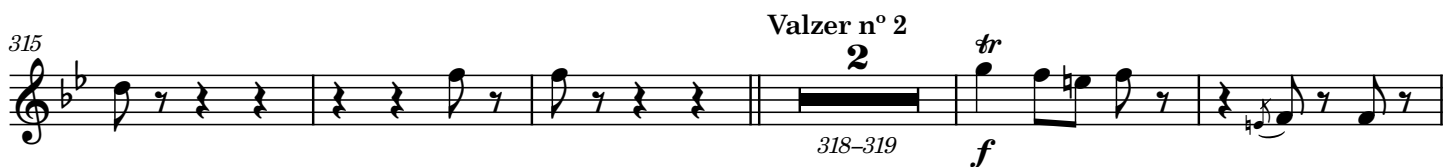
**Walzer n° 5**

2  
207-208  
*p* *f*

2  
215-216  
*p* *f*

223

230  
1.  
2.  
237



7

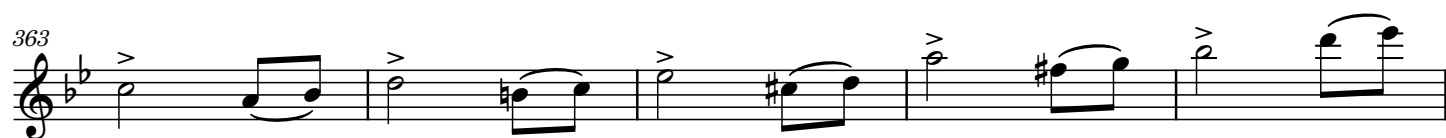
352-358

x 2<sup>a</sup>

*p cresc.*



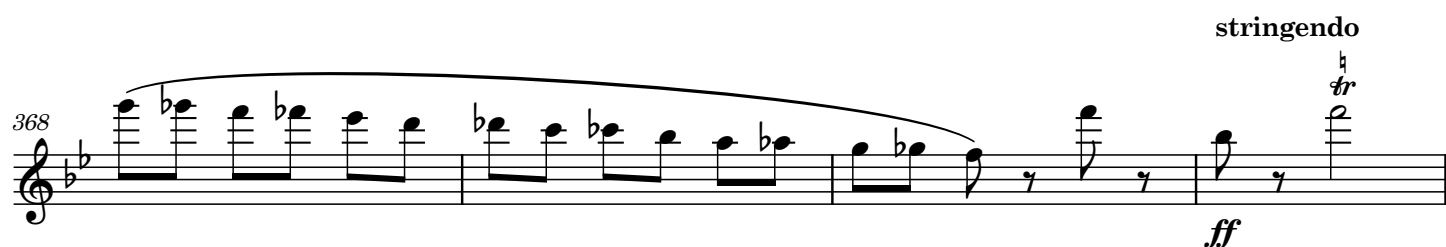
363



368

stringendo

*ff*



372

*tr*



376

*tr*



380

*tr*



386

1

